

LAKE SURVEY MAP

BLUE LAKE
ONEIDA COUNTY
SEC. 28, 29, 32, 33 T. 39 N. R. 6 E.



Recreational Water Use and Water Quality Survey

October 2007

EQUIPMENT RECORDING SONAR MAPPED AUG. 1972
MONTH YEAR
LAKE BOTTOM SYMBOLS

TOPOGRAPHIC SYMBOLS		LAKE BOTTOM SYMBOLS	
(B) Brush	Steep slope	P. Peat	B. Boulders
(W) Wooded	Indefinite shoreline	Mk. Muck	Stumps & Snags
(C) Cleared	Marsh	C. Clay	Rock danger to navigation
(P) Pastured	Spring	M. Marl	Submergent vegetation
(A) Agricultural	Intermittent stream	Sd. Sand	Emergent vegetation
B.M. Bench Mark	Permanent inlet	Sl. Silt	Floating vegetation
Dwelling	Permanent outlet	Gr. Gravel	Brush shelters
Resort	Dam	R. Rubble	
Camp	D.N.R. State owned land	Bc. Bedrock	

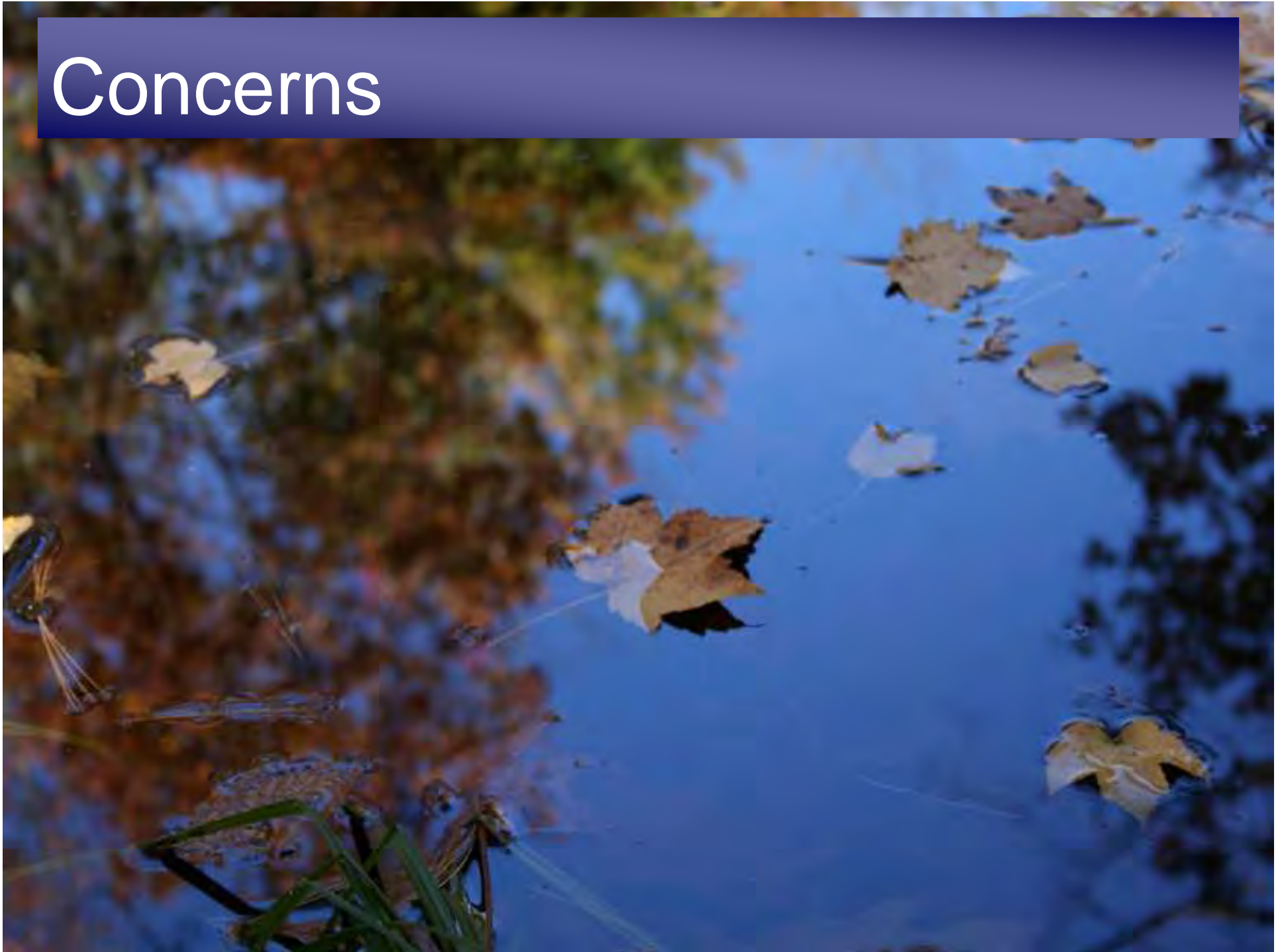
600' 0' 600' 1200' 1800' 2400'
SCALE

Access Access with Parking Boat Livery
Drawn by: C. Holt
Field work by: J. Smith, W. Evans

SPECIES OF FISH	
Muskie	Abundant
N. Pike	Common
Walleye	X
L. M. Bass	X
S. M. Bass	X
Panfish	X
Trout	

WATER AREA 436.4 ACRES
PERCENT OVER 20 FT. 63 %
MAX. DEPTH 49 FEET
TOTAL ALK. 25 P.P.M.
VOLUME 11,160 ACRE FT.
MAIN SHORELINE 5.64 MI.
ISLAND SHORELINE 1.50 MI.

Concerns

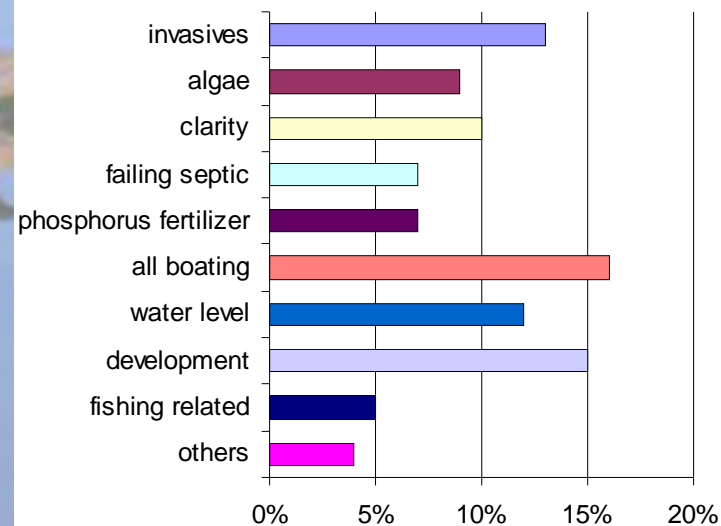


Concerns

Top concerns...

- Invasives (13%)
- Algae (9%)
- Clarity (10%)
- Failing septic (7%)
- Phosphorus fertilizer (7%)
- All boating (16%)
- Water level (12%)
- Development (15%)
- Development (15%)
- Fishing related (5%)
- Other (4%)

Top Five Concerns

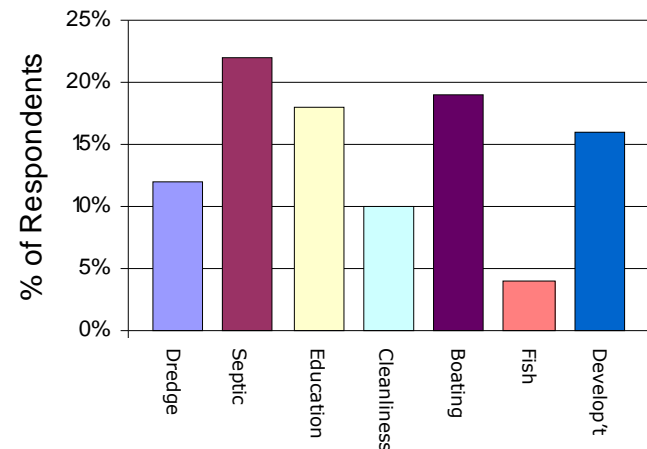


Concerns

Addressing concerns...

- Dredge/water level (12%)
- Test septic systems (21%)
- Landowner education (18%)
- Clean boats/clean waters (10%)
- Boating issues (19%)
- Fish issues (4%)
- Development (16%)

How to Address Concerns

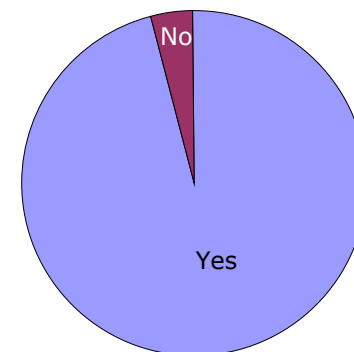


Concerns

Quality (water clarity)...

- Yes (96%)
- No (4%)

Good Environment
Water Quality

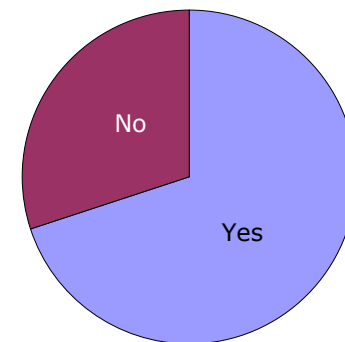


Concerns

Quality (algae/plants)...

- Yes (70%)
- No (30%)

Good Environment
Algae and Aquatic Plants

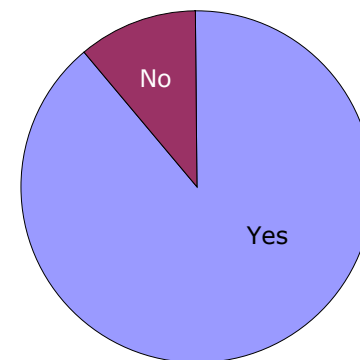


Concerns

Quality (aesthetics)...

- Yes (89%)
- No (11%)

Good Environment
Aesthetics and Wildlife

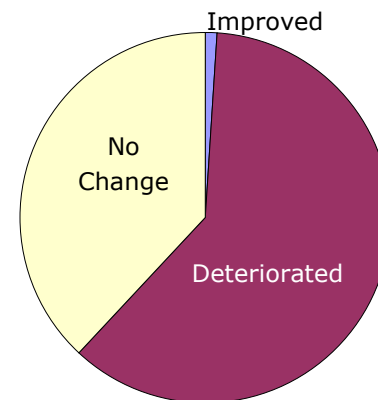


Concerns

Quality (last 5 years)...

- Improved (1%)
- Deteriorated (61%)
- No change (38%)

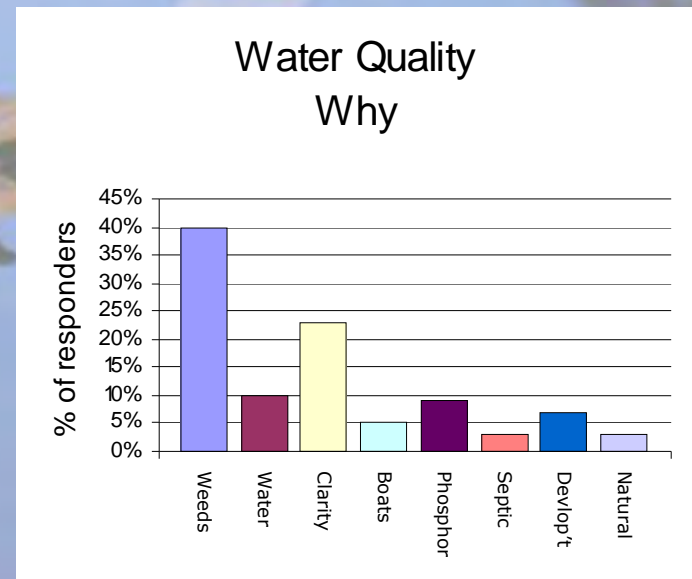
Water Quality
Last 5 Years



Concerns

Water Quality (why)...

- More weeds/algae (40%)
- Low water (10%)
- Less clarity (23%)
- More boat traffic (5%)
- Phosphorus (9%)
- Septic seepage (3%)
- Development (7%)
- Natural process (3%)



Concerns

Water Quality (improvement)...

- no lawn phosphorus/fertilizers (26%)
- septic pumping/inspection (22%)
- boating issues (17%)
- landowner education (15%)
- clean boats/waters (5%)
- weed control (5%)
- other (10%)

Ways to Improve
Water Quality

